



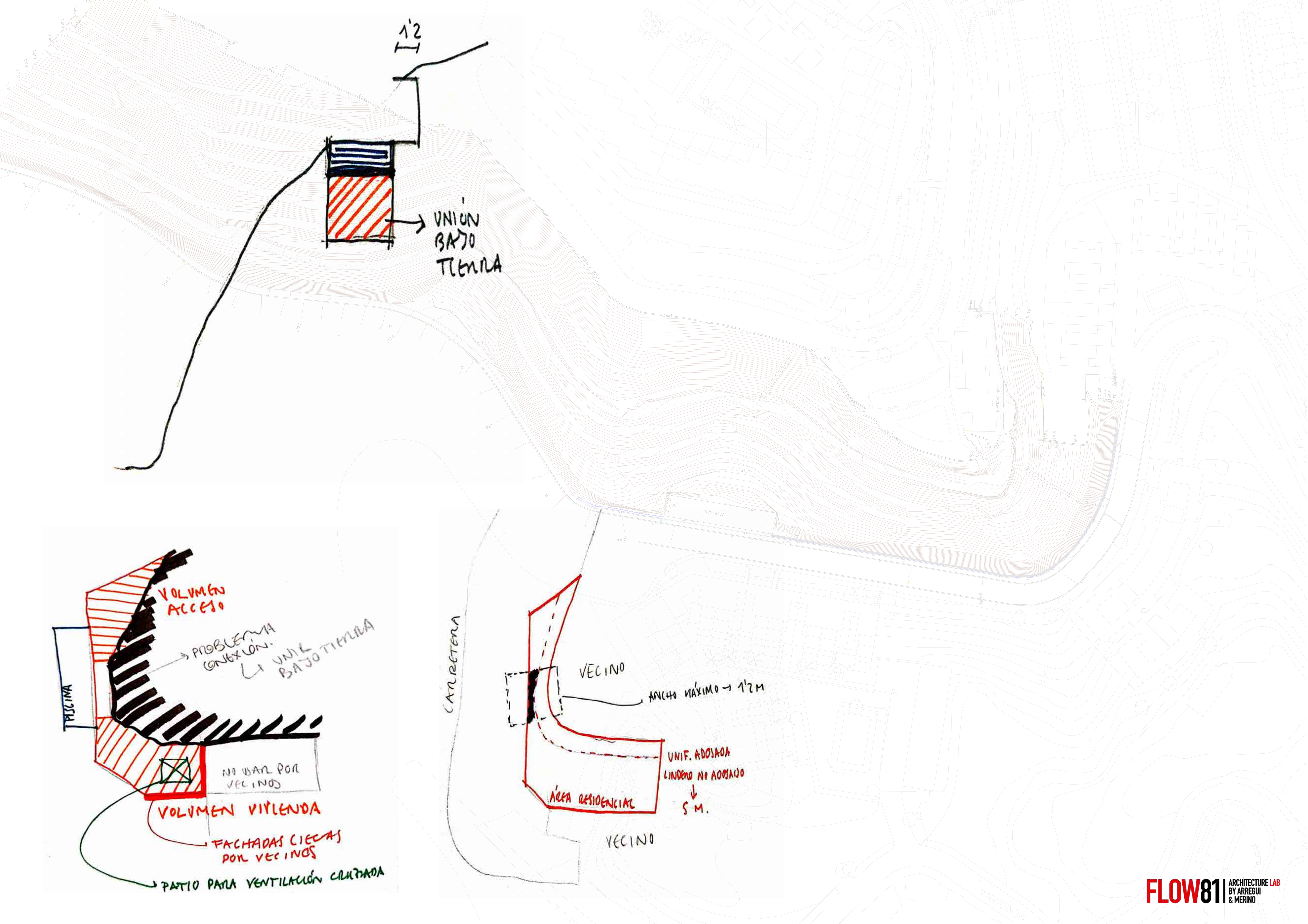
# EL RISCO



# CONDITIONS

- 42% slope, a cliff
- Many neighbors , less privacy
- Very compact rocky terrain
- Very restricted urban development
- Very complicated neighborhood





1'2

UNION  
BAJO  
TIERRA

VOLUMEN  
ACCESO

PROBLEMA  
CONEXION.  
UNION  
BAJO TIERRA

PISCINA

NO WAN POR  
VECINOS

VOLUMEN VIVIENDA

FACHADAS CIEGAS  
POR VECINOS

PATIO PARA VENTILACION CALZADA

CAN RETENA

VECINO

ANCHO MAXIMO - 1'2 M

UNIF. ADOSADA  
LINDERO NO ADOSADO  
↓  
S.M.

AREA RESIDENCIAL

VECINO



# HIDDEN IN ROCK

In the city of Malaga, in a peaceful haven of pine trees and native vegetation, a plot of land with a steep slope of 45%, practically a cliff, hides a nook to live in. It used to be a legendary meeting place for teenagers and the rocks of the mountain are covered in graffiti.

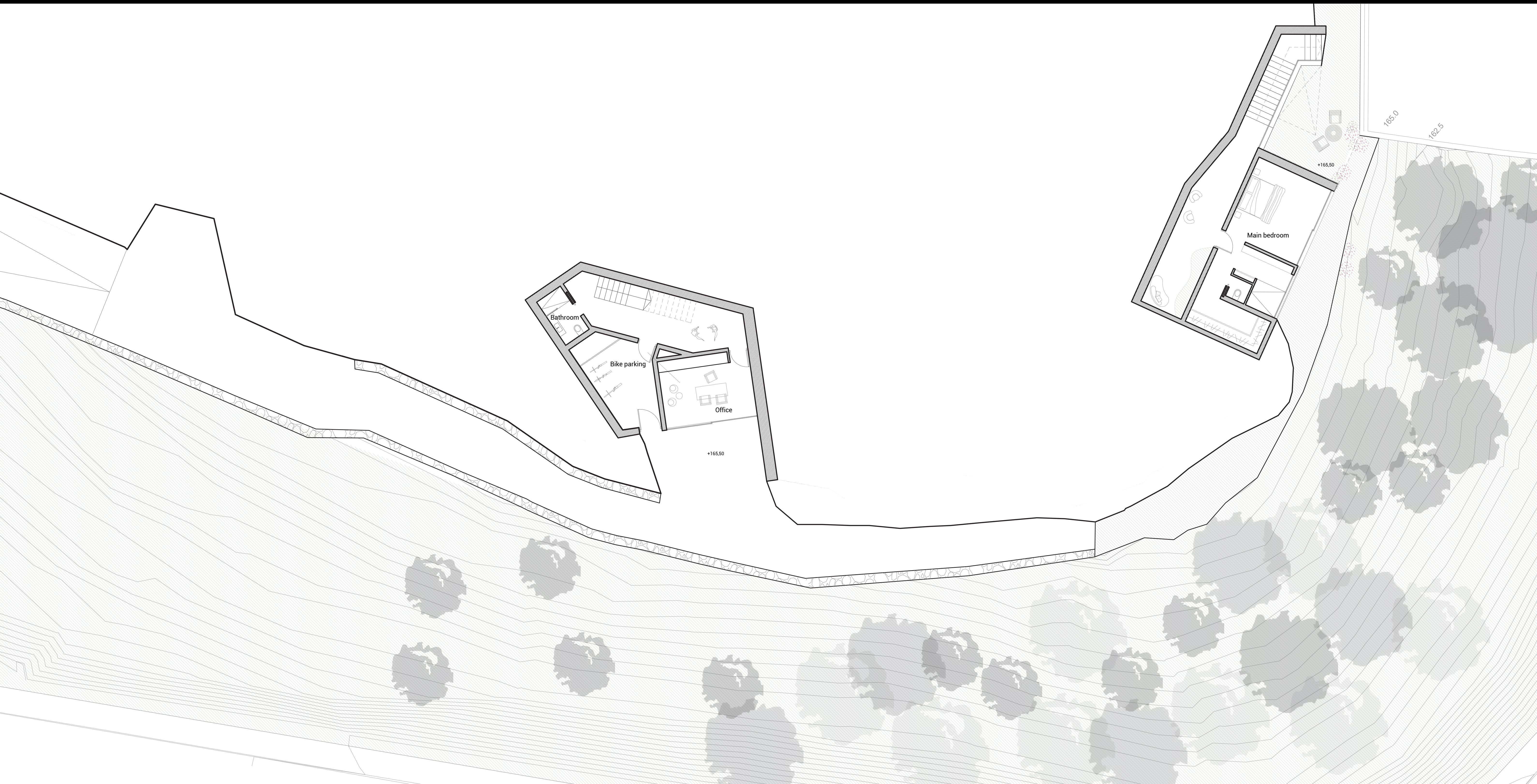
The orography of the area set the basis for the design, which is why it is C-shaped in plan. This particular morphology allows us to hide the house by taking advantage of the hardness of the rock that forms part of the design.

The house is at 169 metres above sea level, with almost imperceptible integration into the natural surroundings. The aim was to minimise impact on the land and energy consumption. The geometry of the building follows the land's contours, using the location's resources, including sunlight and natural ventilation. A few materials are the protagonists: wood, fair-faced concrete, steel and glass. The exposed reinforced concrete facades with the texture of the wood formwork envelop the entire house and the light courtyards break this box to provide extra light and ventilation.

The Bay of Malaga invades the main floor thanks to the large floor to ceiling windows, despite this it is an intimate house that cannot be seen from the outside. The inside-outside concept is very present in this project. The rock enters the house, we are in constant contact with it. The original graffiti are preserved and biodiversity is more abundant than before. It has been repopulated with native trees.

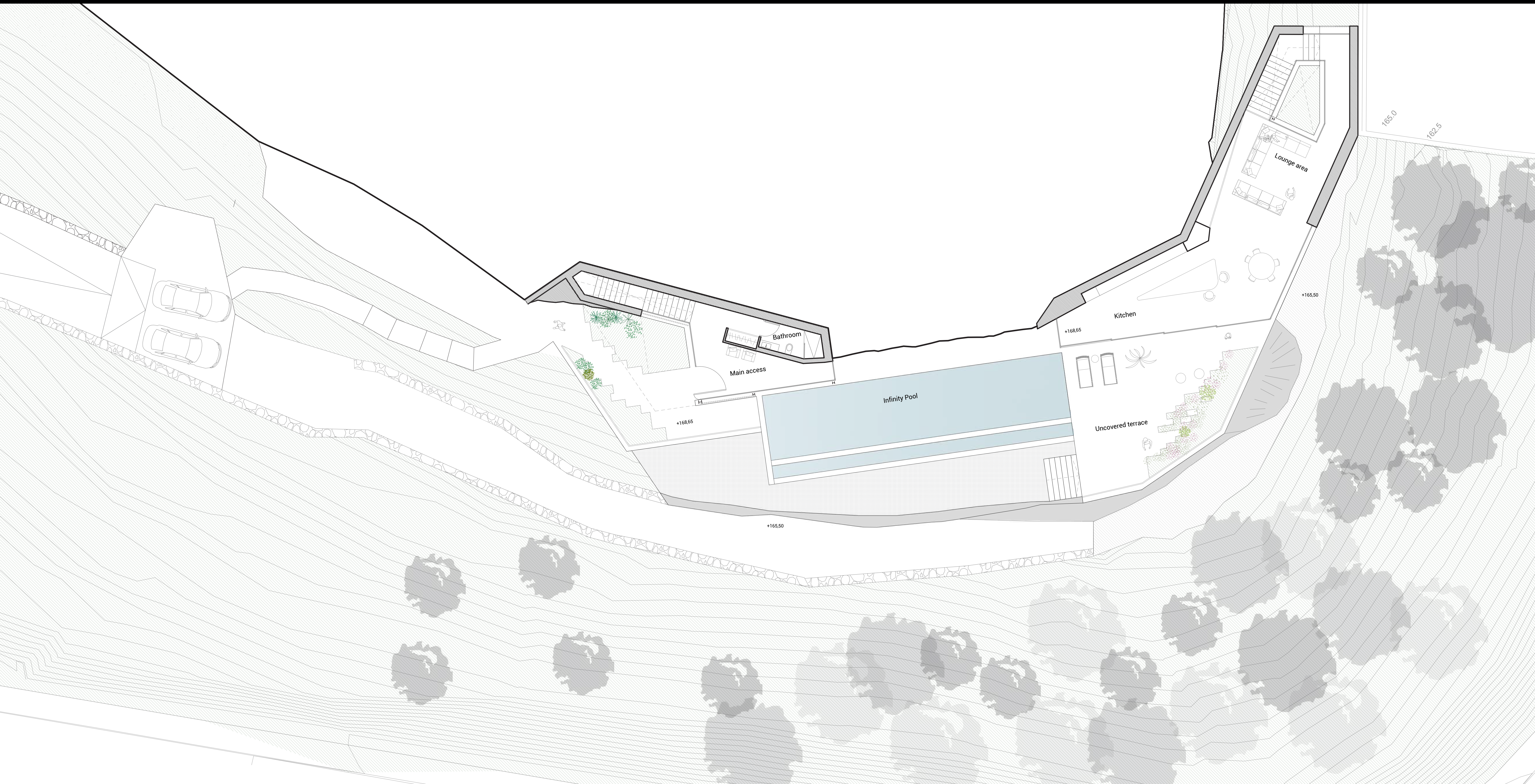






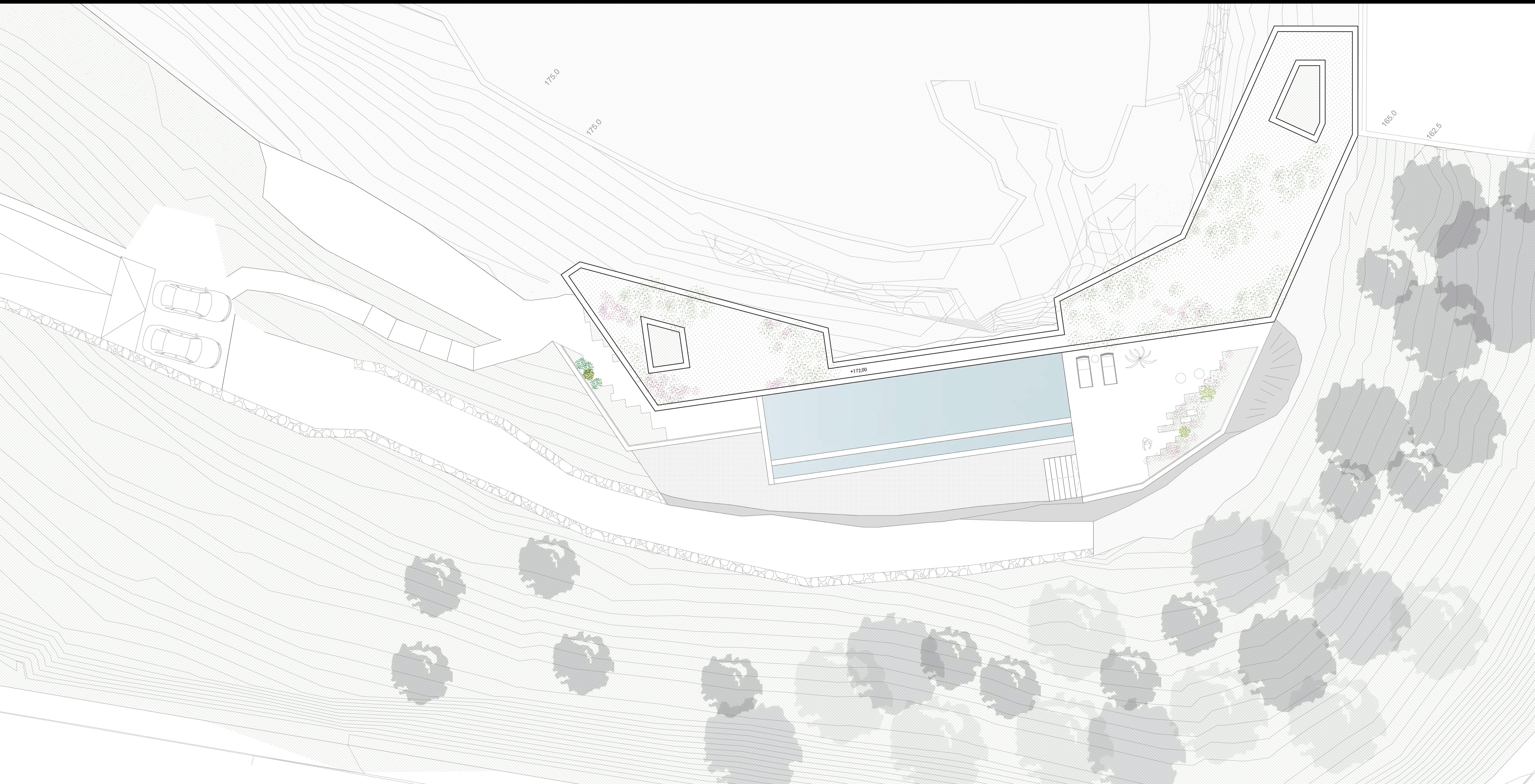
BASEMENT FLOOR: 1/2000





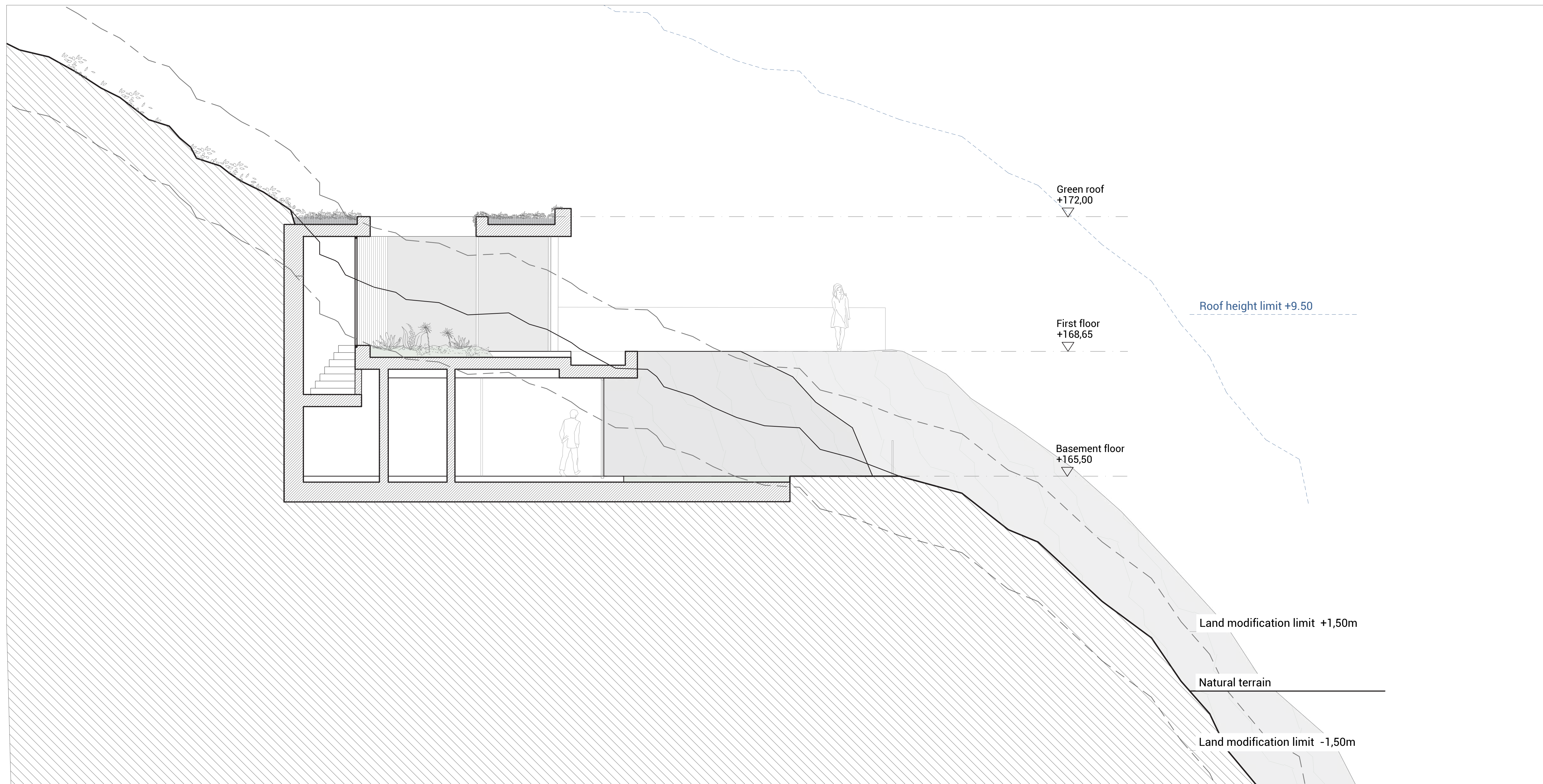
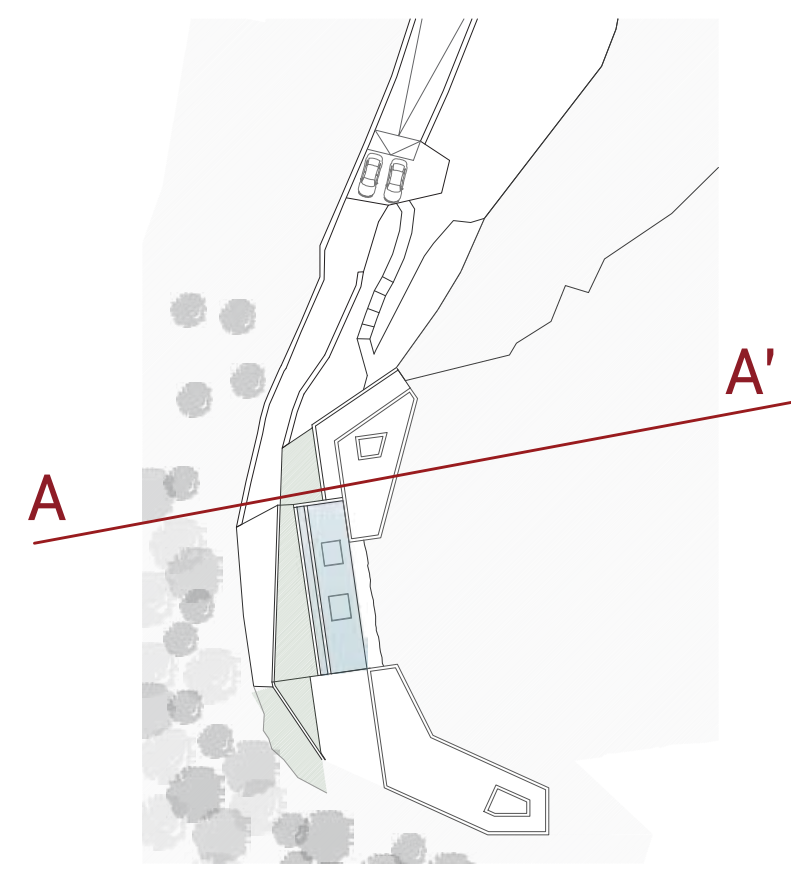
GROUND FLOOR E:1/200



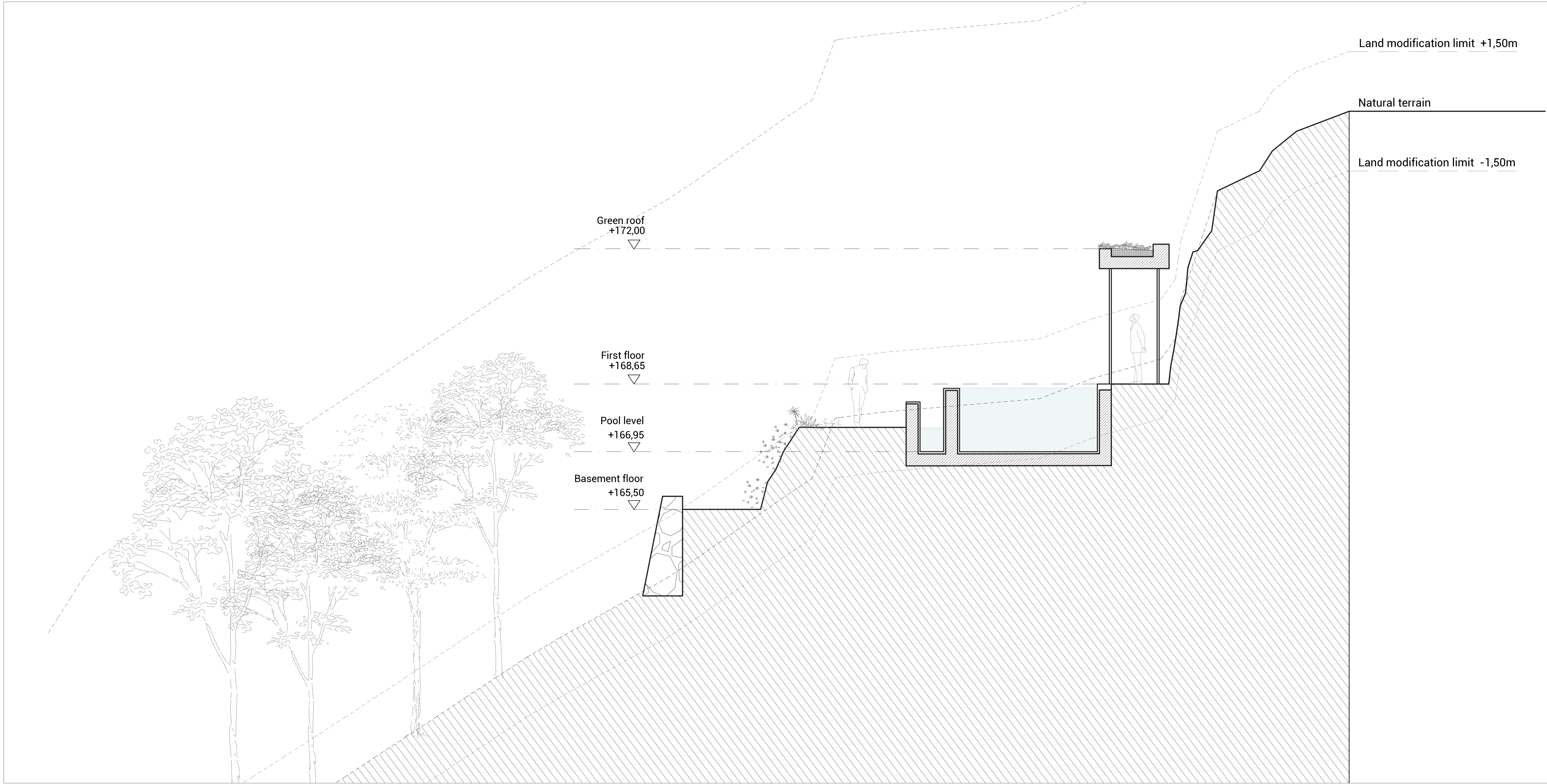


COVERING FLOOR E:1/200

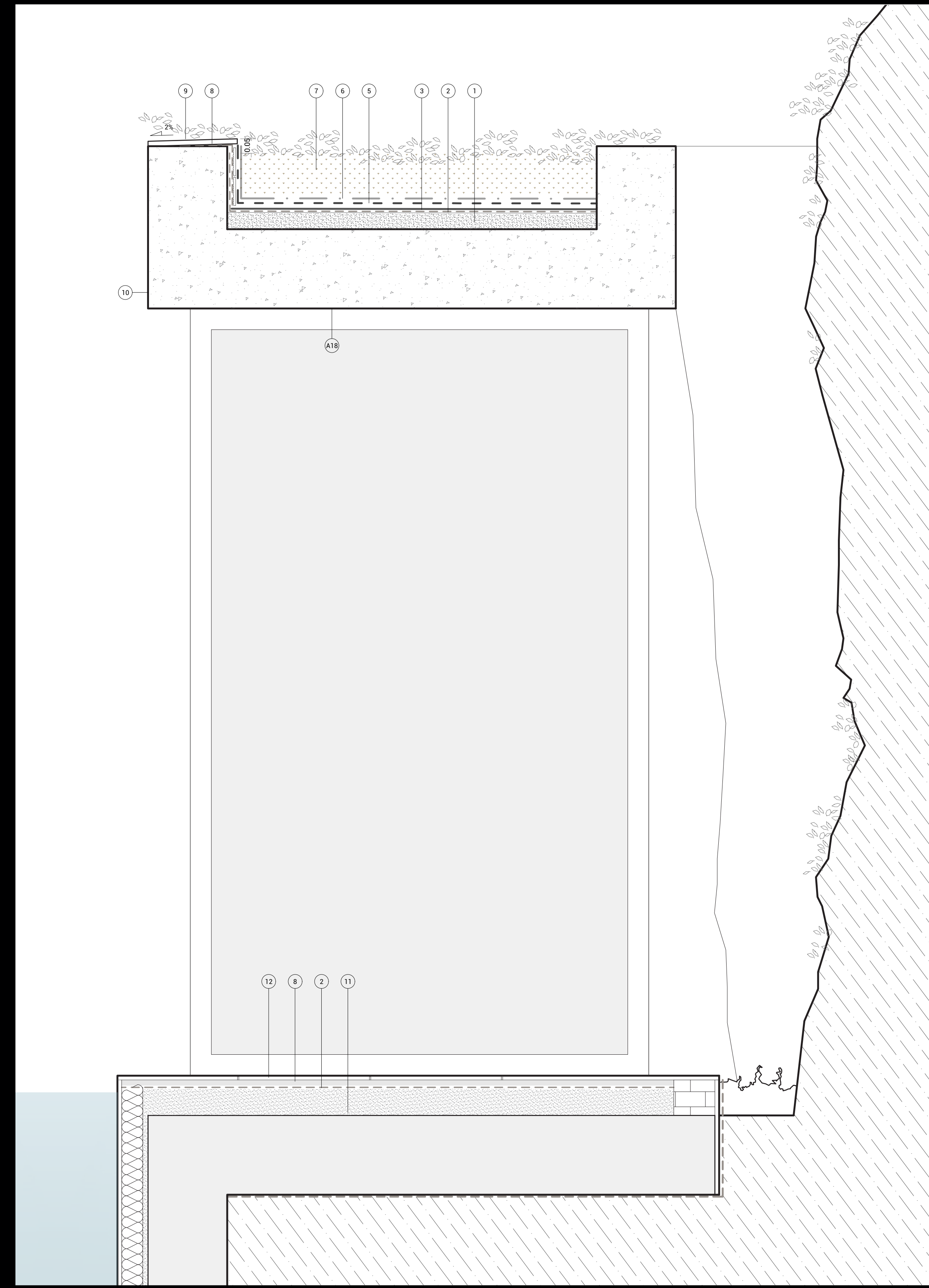












- CONSTRUCTIVE LEGEND
1. Mortar screed for slope formation
  2. Waterproofing with double asphalt membrane over bituminous primer.
  3. Geotextile sheeting
  4. XPS insulation
  5. Retaining drainage sheet
  6. Polypropylene filter
  7. Vegetable substrate
  8. Bonding mortar
  9. Ceramic finishing piece
  10. Exposed structural concrete
  11. Self levelling mortar
  12. Travertine



